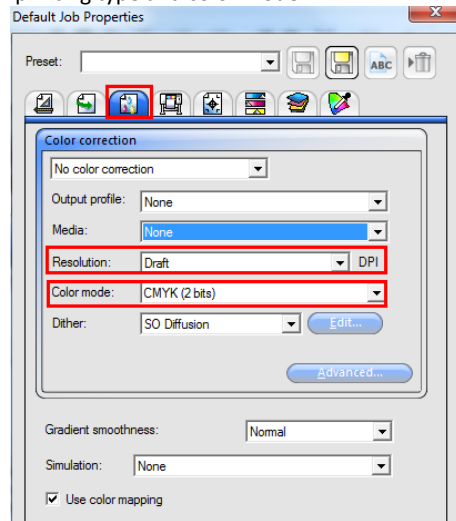




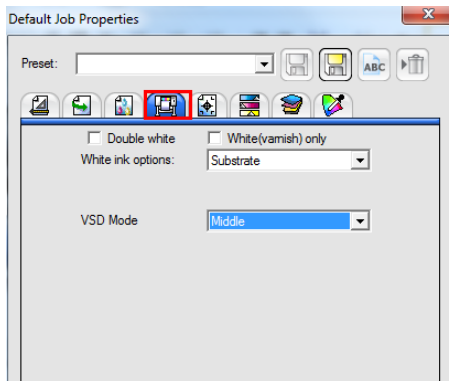
# PhotoPRINT: Create ICC Output Profile in 3<sup>rd</sup> party profiler

## 1 Set the Default job Properties.

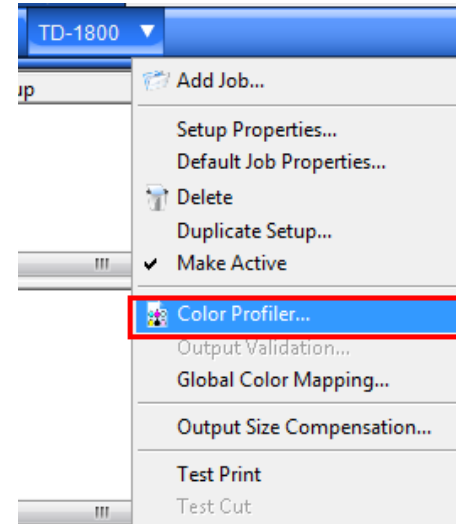
1. Make sure “No color correction”, then select the desired resolution, printing type and color mode.



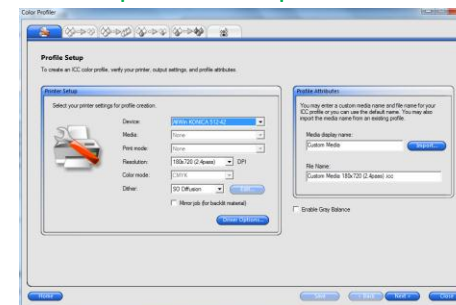
2. Set the desired printer options.



## 2 Start the color profiler



## 3 Set the profiler setup.

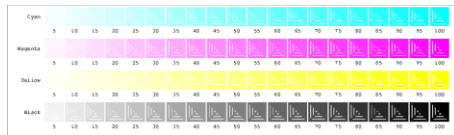


# PhotoPRINT: Create ICC Output Profile in 3<sup>rd</sup> party profiler

- Tips:
1. Input the media display name and file name.
  2. If you create the profile for grayscale printing, select the “Enable gray balance”.  
If for color printing, leave this option unchecked.
  3. Click the save then next.

## 4 Ink Limit

1. Click the “Print ink limit test”, then a file will be printed on your printer.



2. According to the printed test chart, Check the print for bleeding and over saturation of ink.



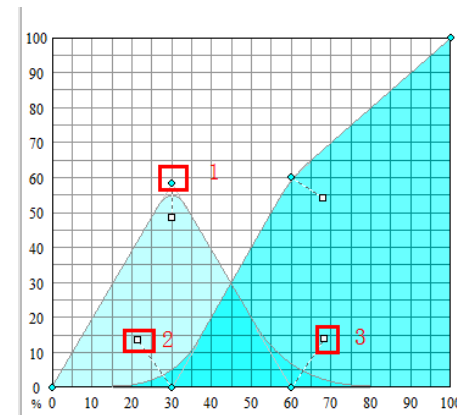
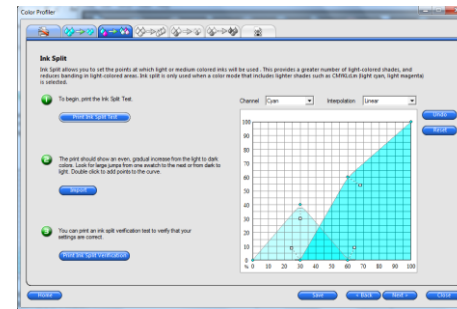
3. Input the ink limit

Ink Name	Ink Limit
Cyan	90%
Magenta	90%
Yellow	90%
Black	90%

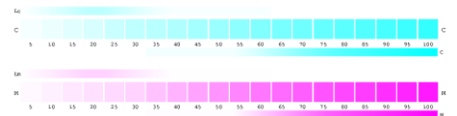
4. Click the save then next.
- Tips: If you have selected a CMYK printing mode you'll go direct to the Linearization step.

## 5 Ink Split

The step only appear If your printer working in 6,7 or more color mode and using the light and dark inks, for example :CMYKLcLm. The Ink Split let the ink from light to dark more nature.



1. Select the channel and set by experience: Up the point of one to 55% vertically and drag the 2, 3 point to limiting case.
2. Print an ink split to verification test to verify that your settings are correct.

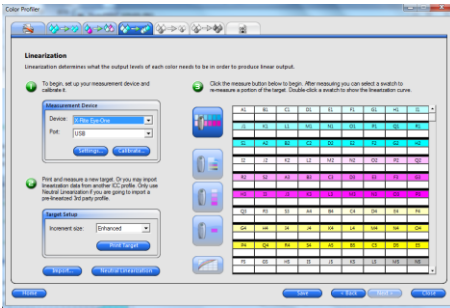


3. After adjusted, Click save and next.

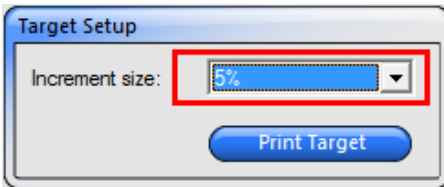
## 6 Linearization



# PhotoPRINT: Create ICC Output Profile in 3<sup>rd</sup> party profiler

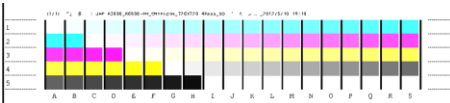



1. Connect the spectrophotometer to the use port of computer.
2. Select the increment size.




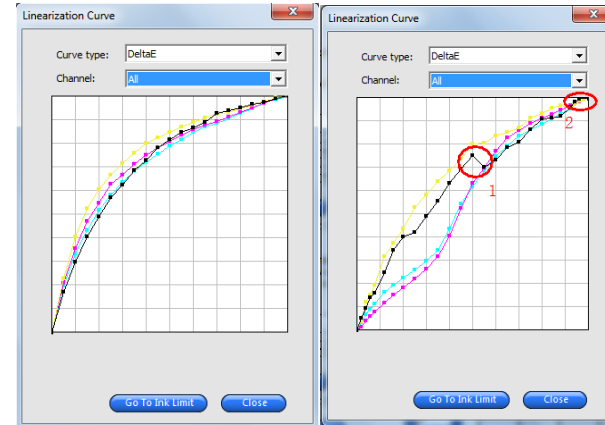
Tips:

- If your printer state is better, you can select the 5% or Enhanced,  
If your printer state is bad, select the 10%.
3. Click Print Target, then a file will be printing.



4. Click  , and start measure.

5. Click  ,and look at the curves of linearization.



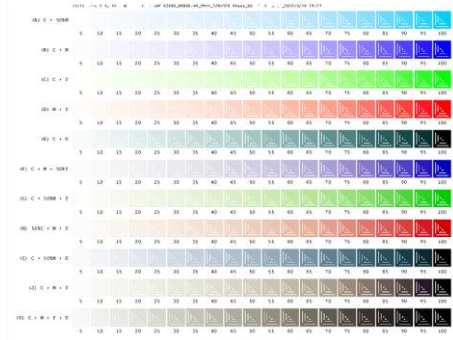
- Tips: 1. Check the curves, the curves should smooth, If have too much up or down, you should measure it again.
2. The red 1 in picture have an error, you should measure it again and the curve red 2 arrive the max ink too early. You should go back to step of Ink limit and limit the black ink more.
  3. The channels of cyan and magenta were too low in the area of light ink. You should go back to the step of ink split.
  4. Click save and next.



# PhotoPRINT: Create ICC Output Profile in 3<sup>rd</sup> party profiler

## 7 Multi-ink Limit

1. Click **Print Multi-ink Limit Test**, a file will be printing .



2. Check the print for bleeding and over saturation of ink.



3. Input the Multi-ink Limit.

Ink Name	Ink Limit
(A) C + 50%M	90%
(B) C + M	88%
(C) C + Y	88%
(D) M + Y	88%
(E) C + K	88%
(F) C + M + 50%Y	84%
(G) C + 50%M + Y	84%

4. Print an ink limit verification test to verify that your settings are correct.

5. Click save and next.

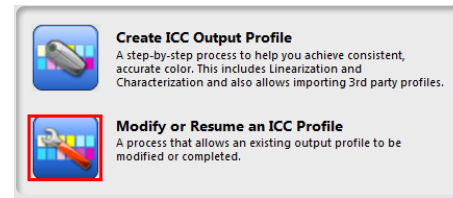
## 8 Characterization

1. Minimize the window of color profiler.

Tips: If the window was closed accidentally or you want to modify the ICC

Profile, you should open the main window of color profiler and use

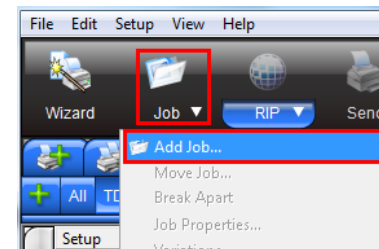
the “Modify or resume ICC profile” option .



2. Add the swatch target profiles of the 3<sup>rd</sup> party profiler to PhotoPRINT and set

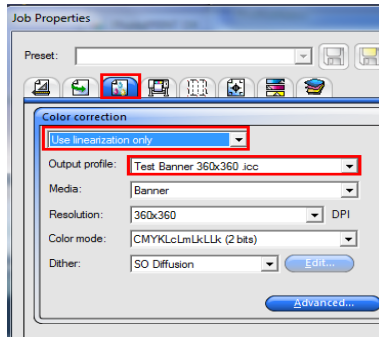
the job properties: Only use the linearization correction and choose the

unfinished ICC profile that you saved in the step of Multi-ink Limit.

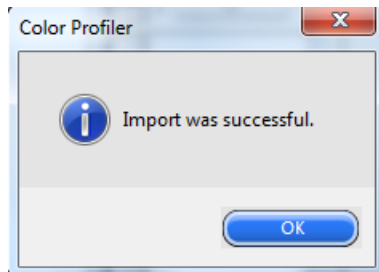
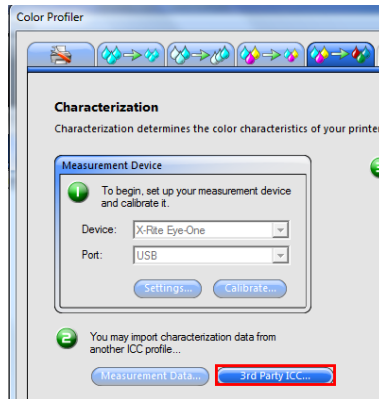




# PhotoPRINT: Create ICC Output Profile in 3<sup>rd</sup> party profiler

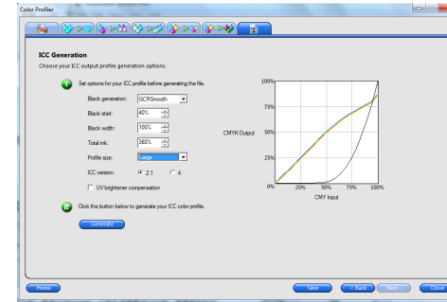


3. Printing the swatch target of the 3<sup>rd</sup> party profiler, and generate the ICC profile in the 3<sup>rd</sup> party Profiler.
4. Maximizing the window of color profiler and click the 3<sup>rd</sup> party ICC button to import the 3<sup>rd</sup> part ICC profile.



5. Click save and next

## 9 ICC Generation



Click the Generate button and finish the creation.